

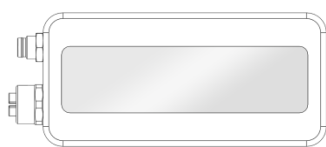
# INDUSTRIAL DEPTH CAMERA D400e Series

## GETTING STARTED PAGE 1 | STARTER KIT BOX CONTENTS

v1.1, June 22, 2020

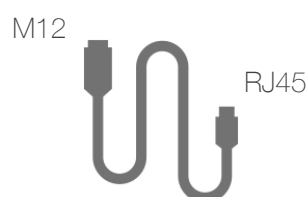
### Starter Kit box contents

#### 1 D400e Camera

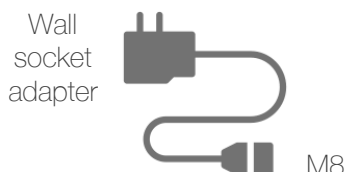


D415e or D435e

#### 2 Data Cable



#### 3 Power Cable



#### 4 Docu-Link



- 1 FRAMOS Industrial Depth Camera D400e (D415e or D435e), with M12 Ethernet and M8 power supply / GPIO connectors.
- 2 Ethernet data cable with RJ45 connector (PC connection) on one side and M12 connector (camera connection) on the other side.
- 3 Power adapter of wall socket mains supply to 12V with M8 camera connector.
- 4 "Business Card" with the [link to the landing page](https://www.amos.com/en/industrial-depth-cameras) of the FRAMOS Industrial Depth Camera portfolio where all documentation and software can be downloaded.

\* If you bought the camera only, no power adapter and no Ethernet cable will be part of the box

#### CONTACT DETAILS

[support@amos.com](mailto:support@amos.com) · +49 (0) 89 – 710 667 – 0

[www.amos.com](http://www.amos.com) · FRAMOS GmbH · Mehlbeerenstr. 2 · 82024 Taufkirchen · Germany

# INDUSTRIAL DEPTH CAMERA D400e Series

## GETTING STARTED PAGE 2 | SYSTEM SETUP

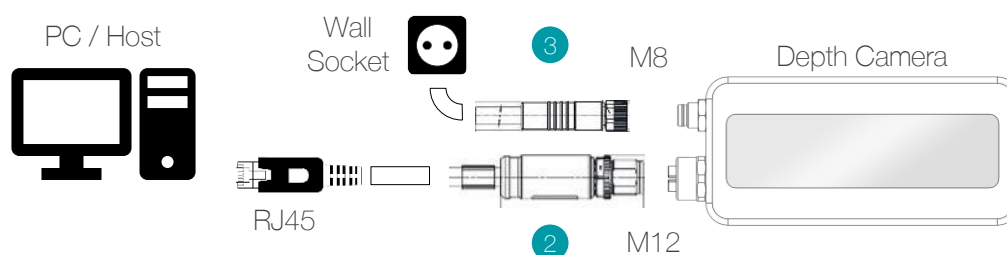
v1.1, June 22, 2020

### Minimum System Requirements

Host PC Operating System:	Windows® 10 Linux Ubuntu 16.04
Host PC Architecture:	x86_64 ARM64 (NVIDIA Jetson TX2)
Hardware:	Gigabit Ethernet Network Interface Card (NIC)

### Steps to setup the system

- 1 Check if all components to run the camera are available. This includes the camera itself, an Ethernet (M12) data cable and power supply (M8). Alternative system setup utilizing single cable for both data and power is presented on page 3.



- 2 Connect the Ethernet data cable with the M12 connector to the lower plug on the left side of the camera. Connect the RJ45 connector to Network Interface Card (NIC) on your PC. Configure NIC to obtain IP address automatically (on Linux OS, set IPv4 configuration method to "Automatic (DHCP)" in case DHCP server is available, or "Link-Local Only" in case DHCP server is not available).
- 3 Connect the power cable on the side of the M8 connector to the upper plug on the left side of the camera and then plug the adapter into the wall socket.

#### CONTACT DETAILS

[support@framos.com](mailto:support@framos.com) · +49 (0) 89 – 710 667 – 0

[www.framos.com](http://www.framos.com) · FRAMOS GmbH · Mehlbeerenstr. 2 · 82024 Taufkirchen · Germany

# INDUSTRIAL DEPTH CAMERA D400e Series

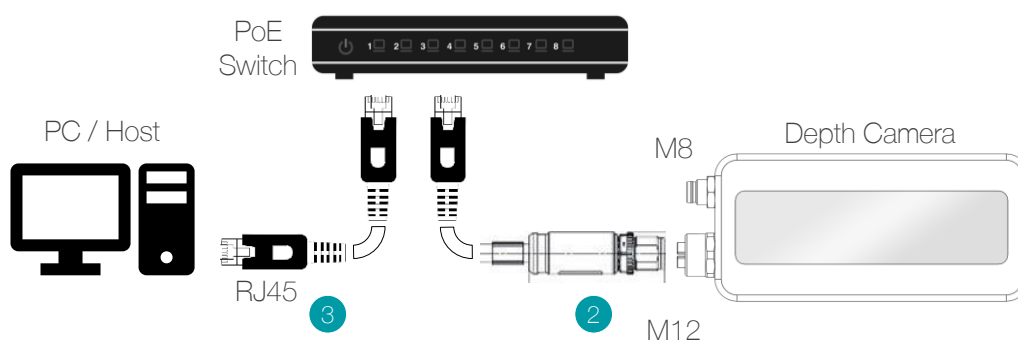
## GETTING STARTED PAGE 3 | SYSTEM SETUP (POE)

v1.1, June 22, 2020

### Steps to setup the system (PoE)

---

- 1 In case a PoE switch is available, the camera can be powered via the same Ethernet (M12) data cable used for data transfer.



- 2 Connect the Ethernet data cable with the M12 connector to the lower plug on the left side of the camera. Connect the RJ45 connector to the PoE capable port of the PoE switch. The camera will immediately start powering up.
- 3 Connect the PC to the PoE switch via standard RJ45 Ethernet cable (the port used for the PC connection does not need to be PoE capable). Configure NIC to obtain IP address automatically (on Linux OS, set IPv4 configuration method to "Automatic (DHCP)" in case DHCP server is available, or "Link-Local Only" in case DHCP server is not available).

#### CONTACT DETAILS

[support@framos.com](mailto:support@framos.com) · +49 (0) 89 – 710 667 – 0

[www.framos.com](http://www.framos.com) · FRAMOS GmbH · Mehlbeerenstr. 2 · 82024 Taufkirchen · Germany

# INDUSTRIAL DEPTH CAMERA D400e Series

## GETTING STARTED PAGE 4 | SOFTWARE INSTALLATION

v1.1, June 22, 2020

### Steps to install the software

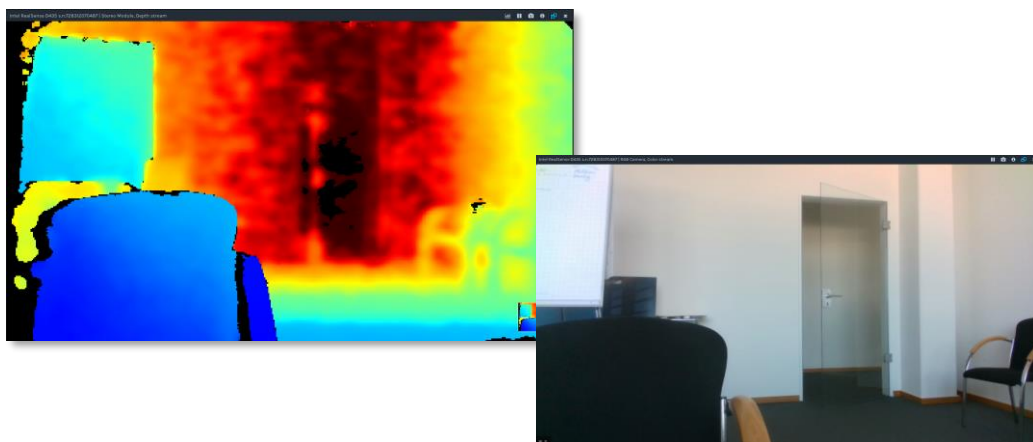
---

The Software Package for the D400e cameras comprises of two components:

- FRAMOS CameraSuite
- Intel® RealSense™ SDK with support for D400e cameras

Please download the software package from here: [FRAMOS D400e Software Package](#)

- 1 Install FRAMOS CameraSuite on the host system (link above) first. Please uninstall previous versions of CameraSuite and follow the instructions provided inside the package for successful installation. Reboot the system after the installation has finished.
- 2 Install Intel® RealSense™ SDK with support for D400e cameras (link above). Please uninstall other versions of Intel® RealSense™ SDK before proceeding with the installation.
- 3 After installation, launch Intel® RealSense™ Viewer from the host terminal. It will automatically connect to first camera discovered.
- 4 Enable Depth and RGB streams to display them in the Intel® RealSense™ Viewer application. For more information about how to use the Viewer application please review the [Intel® RealSense™ D400 Series/SR300 Viewer User Guide](#). Note that some features of SDK might not be fully implemented in current D400e camera firmware.



#### CONTACT DETAILS

[support@framos.com](mailto:support@framos.com) · +49 (0) 89 – 710 667 – 0

[www.framos.com](http://www.framos.com) · FRAMOS GmbH · Mehlbeerenstr. 2 · 82024 Taufkirchen · Germany