

Firmware update guide

MaVis Imaging GmbH
Mehlbeerenstraße 2
82024 Taufkirchen
Germany


Contact Information	Supplier
Company	MaVis Imaging GmbH
Email	sales@mavis-imaging.com
Phone	+39 039 888 0585

Purpose

Document explaining how to update the firmware of your strobe controller.

Guide

The latest firmware files you can find on our website, in the Support downloads tab, under FRAMOS section.
<https://www.mavis-imaging.com/en/support/>



Strobe Controller Software for HPSC and IPSC Series
ScLib Strobe Controller Configuration Software and Development Kit

[Windows x64 - Version 2.4.2.0](#)
[Windows x86 - Version 2.4.2.0](#)
[Linux x86 Deb - Version 2.4.2.0](#)
[Linux x64 Deb - Version 2.4.2.0](#)
[Linux x86 Rpm - Version 2.4.2.0](#)
[Linux x64 Rpm - Version 2.4.2.0](#)

User manuals

[Strobe Controller IPSC Series StartUp Guide \(v1_0_1\)](#)

[Strobe Controller User Manual \(v2.2.1\)](#)

[Strobe Controller RAW-Commands HPSCx \(v1.1.0\)](#)

[Strobe Controller RAW-Commands IPSCx \(v1.0.0\)](#)

Latest strobe controller Firmware for HPSC and IPSC Series

[HPSC1 - HPSC2 - HPSC4](#)

[IPSC1 - IPSC2 - IPSC4](#)

[Firmware update readme](#)

- The firmware update is delivered to the strobe controller via the Ethernet connection.
- To update the firmware, the IP address of the strobe controller must be configured in "static" mode and not in "dynamic DHCP" mode.
 - o Information on how to make the Ethernet connection can be found in chapter 6.2.2 of the user manual.
- The controller power switch must be placed in Off mode (see chapter 7.3.1. Off mode)

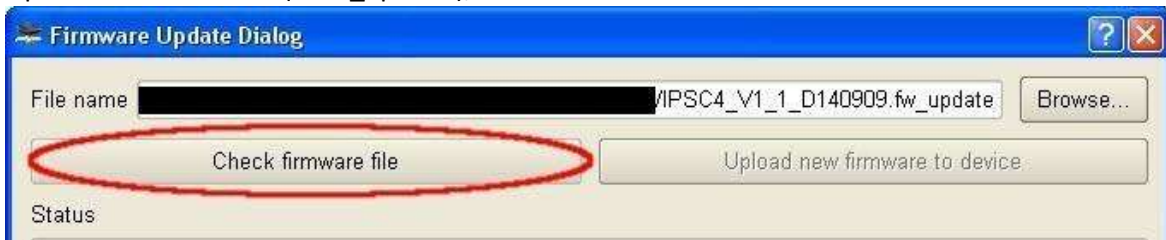
1. Go to Status tab and press Firmware Update



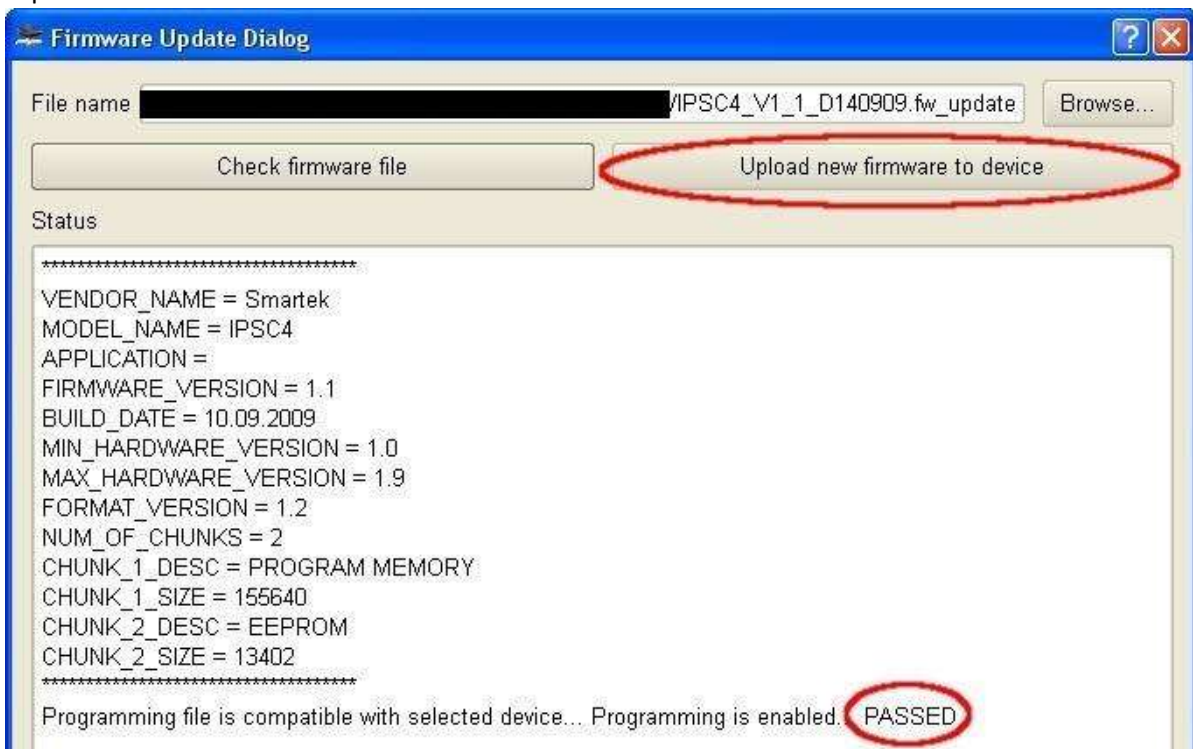
2. Click on Browse



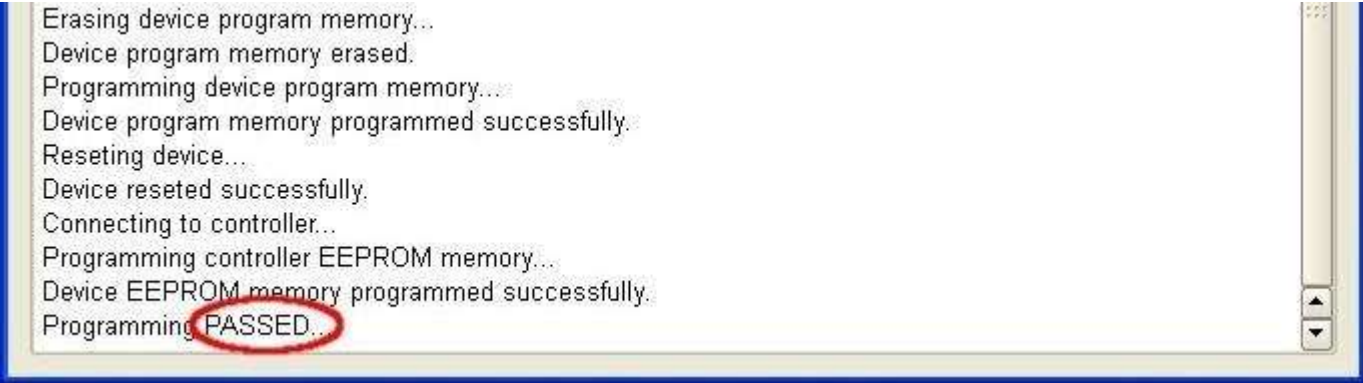
3. Open the firmware file (*.fw_update), then click 'Check firmware file'



4. If the firmware is compatible, 'PASSED' will be indicated in the output console window and the button 'Upload new firmware to device' will be available



5. During the firmware update the LEDs power (green) and strobe (yellow) are solid ON. When the process completes 'PASSED' will be displayed on the output console. Simply close the window after the 'Programming PASSED' message



```
Erasing device program memory...
Device program memory erased.
Programming device program memory...
Device program memory programmed successfully.
Reseting device...
Device reseted successfully.
Connecting to controller...
Programming controller EEPROM memory...
Device EEPROM memory programmed successfully.
Programming PASSED...
```